

# PIMCO CommoditiesPLUS® Strategy Instl (PCLIX)

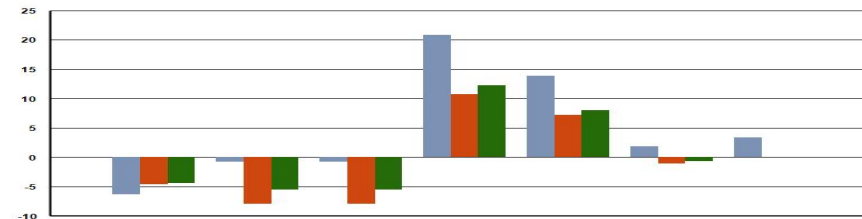
83

As of: 12/31/2023

### Fund Objective

The investment seeks total return which exceeds that of its benchmark consistent with prudent investment management. The fund invests in commodity-linked derivative instruments backed by an actively managed, low volatility portfolio of Fixed Income Instruments, and may also invest directly in commodities. "Fixed Income Instruments" include bonds, debt securities and other similar instruments issued by various U.S. and non-U.S. public- or private-sector entities. It is non-diversified.

### Annualized Total Returns



### Portfolio Data

Universe	Open-Ended
Peer Group	Commodities Broad Basket
Investment Vehicle ID	F00000GWSG
Strategy Inception	05-28-2010
Share Class Inception	05-28-2010
Calculation Index	Bloomberg Commodity TR USD
Manager Structure	Team
Lead Manager	Team
Manager Tenure	9
Strategy Assets	\$3.87b
Share Class Assets	\$1.97b / 50.86%
Avg Market Cap	\$3.21b
Closed New Inv	-
Closed All Inv	-
Min Investment	\$1,000,000
Turnover	247%
P/E	4.06
P.B.	1.31

### Expense Data

Prospectus Net / Gross	0.81% / 0.98%
Cat Avg Exp Ratio Net / Gross	1.20% / 1.37%
Expense Rank Net / Gross	29% / 32%
12b-1 Fees	0.00%
Waiver Amount	\$3,593,149
Waiver Exp Date	07/31/2024

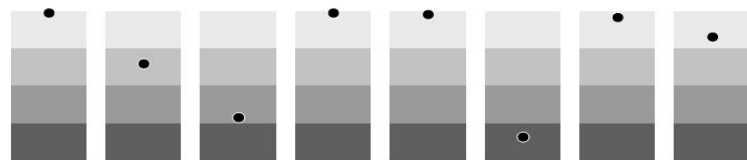
	QTR	YTD	1 YEAR	3 YEAR	5 YEAR	10 YEAR	SINCE INCEPTION
PCLIX	(6.31)	(0.75)	(0.75)	20.80	13.83	1.82	3.34
Calculation Index	(4.63)	(7.91)	(7.91)	10.76	7.23	(1.11)	-
Category Average	(4.39)	(5.56)	(5.56)	12.29	8.05	(0.63)	-
Rank in Category	89%	4%	4%	1%	4%	7%	-
Category Size	110	105	105	100	96	62	-

Performance data quoted represents past performance. Past performance does not guarantee future results. Investment return and principal value will fluctuate so that an investor's shares, when redeemed, may be worth more or less than their original cost. Current performance may be lower or higher than the performance quoted. To obtain current month-end performance information, please contact your plan advisor.

### Calendar Year Return (%)

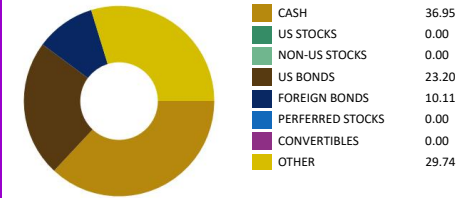
	2019	2020	2021	2022	2023
PCLIX	19.36	(9.15)	44.03	23.31	(0.75)
Calculation Index	7.70	(3.14)	27.11	16.09	(7.91)
Category Average	7.87	(3.09)	29.74	15.74	(5.56)
Rank in Category	2%	82%	1%	3%	4%
Category Size	121	115	105	105	105

### 3 Year Risk Quartile Charts



	Alpha	Beta	R²	Info Ratio	Sharpe	Std Dev	Up Capture	Down Capture
PCLIX	8.80	1.03	86.24	1.50	1.00	17.78	118.18	77.68
25th Percentile	2.10	1.06	98.26	0.62	0.67	15.61	105.47	81.34
50th Percentile	0.09	1.01	96.17	(0.03)	0.55	16.60	100.38	98.35
75th Percentile	(0.79)	0.91	85.97	(0.23)	0.49	17.20	90.16	104.80
Rank	1%	35%	71%	1%	2%	84%	4%	17%

### Asset Allocation (%)



### Sector Weighting

	PCLIX	Category Average
% BASIC MATERIALS	0.00	-
% CONSUMER CYCLICAL	0.00	-
% FINANCIAL SERVICES	0.00	-
% REAL ESTATE	0.00	-
% CONSUMER DEFENSIVE	0.00	-
% HEALTHCARE	0.00	-
% UTILITIES	0.00	-
% COMMUNICATION SERVICES	0.00	-
% ENERGY	0.00	-
% INDUSTRIALS	0.00	-
% TECHNOLOGY	0.00	-

### Top Ten Holding (%)

Federal National Mortgage Association 4%	5.11
Japan (Government Of) 0%	0.91
Japan (Government Of) 0%	1.01
Japan (Government Of) 0%	1.87
United States Treasury Notes 1.375%	2.52
United States Treasury Notes 2.75%	0.80
<b>% Assets in Top 10</b>	<b>12.22</b>