

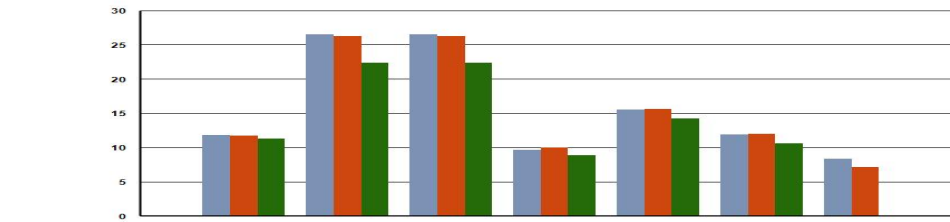
GuideStone Funds Equity Index Instl (GEQYX)

As of: 12/31/2023

Fund Objective

The investment seeks to provide investment results approximating the aggregate price and dividend performance of the securities included in the S&P 500® Index. The fund will invest substantially all, and normally at least 80% of its total assets, in the equity securities (primarily common stocks and stock index derivatives) included in the S&P 500® Index, in weightings that approximate the relative composition of the securities contained in the S&P 500® Index. It may invest to a lesser extent in derivative instruments, including exchange listed options, futures and swap agreements.

Annualized Total Returns



	QTR	YTD	1 YEAR	3 YEAR	5 YEAR	10 YEAR	SINCE INCEPTION
GEQYX	11.84	26.51	26.51	9.68	15.48	11.91	8.35
Calculation Index	11.68	26.26	26.26	9.97	15.65	11.99	7.12
Category Average	11.25	22.32	22.32	8.83	14.26	10.55	-
Rank in Category	38%	21%	21%	34%	23%	11%	-
Category Size	1497	1430	1430	1298	1191	897	-

Performance data quoted represents past performance. Past performance does not guarantee future results. Investment return and principal value will fluctuate so that an investor's shares, when redeemed, may be worth more or less than their original cost. Current performance may be lower or higher than the performance quoted. To obtain current month-end performance information, please contact your plan advisor.

Calendar Year Return (%)

	2019	2020	2021	2022	2023
GEQYX	31.68	18.19	28.28	(18.70)	26.51
Calculation Index	31.44	18.37	28.66	(18.13)	26.26
Category Average	28.78	15.83	26.07	(16.96)	22.32
Rank in Category	21%	40%	29%	64%	21%
Category Size	1387	1363	1382	1358	1430

3 Year Risk Quartile Charts

	Alpha	Beta	R ²	Info Ratio	Sharpe	Std Dev	Up Capture	Down Capture
GEQYX	(0.28)	1.00	99.97	(0.95)	0.47	17.60	99.52	100.56
25th Percentile	0.20	1.00	98.84	(0.00)	0.49	16.72	99.23	93.72
50th Percentile	(0.71)	0.97	96.68	(0.41)	0.44	17.39	96.21	98.73
75th Percentile	(1.69)	0.93	92.60	(0.94)	0.38	17.74	90.98	101.74
Rank	39%	22%	10%	77%	38%	69%	22%	67%

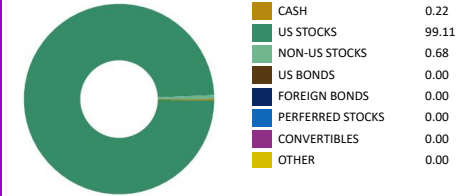
Portfolio Data

Universe	Open-Ended
Peer Group	Large Blend
Investment Vehicle ID	FOUSA0592C
Strategy Inception	08-27-2001
Share Class Inception	08-27-2001
Calculation Index	iShares Core S&P 500 ETF
Manager Structure	Team
Lead Manager	Team
Manager Tenure	7
Strategy Assets	\$3.76b
Share Class Assets	\$2.82b / 75.03%
Avg Market Cap	\$232.04b
Closed New Inv	-
Closed All Inv	-
Min Investment	\$1,000,000
Turnover	4%
P/E	18.91
P.B.	3.58

Expense Data

Prospectus Net / Gross	0.12% / 0.12%
Cat Avg Exp Ratio Net / Gross	1.08% / 2.21%
Expense Rank Net / Gross	7% / 5%
12b-1 Fees	0.00%
Waiver Amount	-
Waiver Exp Date	-

Asset Allocation (%)



Sector Weighting

	GEQYX	Category Average
% BASIC MATERIALS	2.19	2.61
% CONSUMER CYCLICAL	10.53	9.72
% FINANCIAL SERVICES	12.37	12.53
% REAL ESTATE	2.35	2.01
% CONSUMER DEFENSIVE	6.10	6.34
% HEALTHCARE	11.94	13.46
% UTILITIES	2.39	2.15
% COMMUNICATION SERVICES	8.51	7.87
% ENERGY	4.00	4.38
% INDUSTRIALS	7.88	9.59
% TECHNOLOGY	28.71	25.79

Top Ten Holding (%)

Alphabet Inc Class A	1.98
Alphabet Inc Class C	1.75
Amazon.com Inc	3.35
Apple Inc	7.09
Berkshire Hathaway Inc Class B	1.69
GuideStone Funds Money Market Instl	2.15
Meta Platforms Inc Class A	1.86
Microsoft Corp	7.14
NVIDIA Corp	2.93
Tesla Inc	1.69
% Assets in Top 10	31.63