

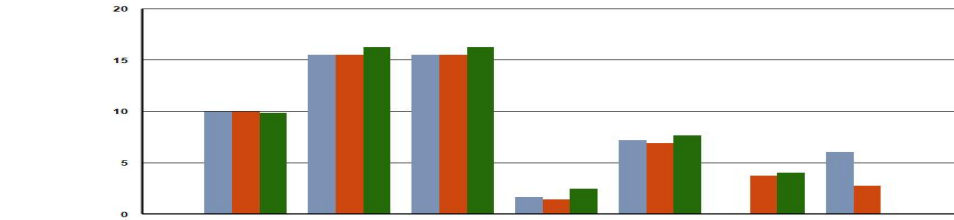
# Fidelity® Total International Index (FTIH)

As of: 12/31/2023

### Fund Objective

The investment seeks to provide investment results that correspond to the total return of foreign developed and emerging stock markets. The fund normally invests at least 80% of assets in securities included in the MSCI ACWI (All Country World Index) ex USA Investable Market Index and in depositary receipts representing securities included in the index. The MSCI ACWI (All Country World Index) ex USA Investable Market Index is a market capitalization-weighted index designed to measure the investable equity market performance for global investors of large, mid, and small-cap stocks in developed and emerging markets, excluding the U.S.

### Annualized Total Returns



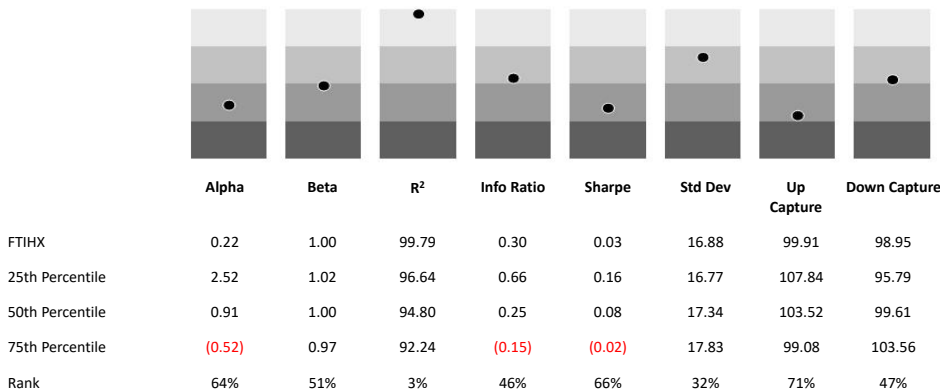
	QTR	YTD	1 YEAR	3 YEAR	5 YEAR	10 YEAR	SINCE INCEPTION
FTIH	9.97	15.51	15.51	1.61	7.20	-	6.00
Calculation Index	9.94	15.46	15.46	1.38	6.89	3.70	2.73
Category Average	9.81	16.25	16.25	2.43	7.62	3.98	-
Rank in Category	49%	60%	60%	63%	70%	-	-
Category Size	761	744	744	698	642	421	-

Performance data quoted represents past performance. Past performance does not guarantee future results. Investment return and principal value will fluctuate so that an investor's shares, when redeemed, may be worth more or less than their original cost. Current performance may be lower or higher than the performance quoted. To obtain current month-end performance information, please contact your plan advisor.

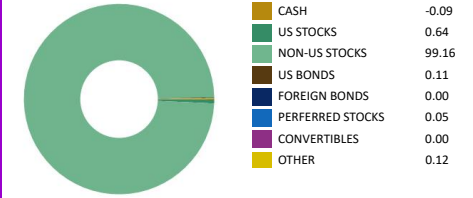
### Calendar Year Return (%)

	2019	2020	2021	2022	2023
FTIH	21.48	11.07	8.47	(16.28)	15.51
Calculation Index	21.21	10.48	7.46	(16.02)	15.46
Category Average	21.59	9.30	9.72	(15.84)	16.25
Rank in Category	64%	45%	68%	56%	60%
Category Size	732	785	767	744	744

### 3 Year Risk Quartile Charts



### Asset Allocation (%)



### Geographic Weighting

	FTIH	Category Average
% North America	0.64	2.73
% Latin America	2.43	1.14
% United Kingdom	9.41	13.57
% Europe Developed	19.65	27.01
% Europe Emerging	0.69	0.08
% Africa/Middle East	0.91	0.13
% Japan	15.70	18.55
% Australia	4.94	4.54
% Asia Developed	10.46	6.21
% Asia Emerging	14.27	4.65
% Not Classified	-	-

### Top Ten Holding (%)

ASML Holding NV	0.91
Fidelity® Cash Central Fund	3.48
Nestle SA	1.07
Novo Nordisk A/S Class B	1.18
Samsung Electronics Co Ltd	0.90
Shell PLC	0.80
Taiwan Semiconductor Manufacturing Co Ltd	1.50
Tencent Holdings Ltd	0.93
<b>% Assets in Top 10</b>	<b>10.77</b>

### Portfolio Data

Universe	Open-Ended
Peer Group	Foreign Large Blend
Investment Vehicle ID	F00000WZVM
Strategy Inception	06-07-2016
Share Class Inception	06-07-2016
Calculation Index	iShares MSCI ACWI ex US ETF
Manager Structure	Team
Lead Manager	Team
Manager Tenure	7
Strategy Assets	\$11.52b
Share Class Assets	\$11.52b / 100.00%
Avg Market Cap	\$26.72b
Closed New Inv	-
Closed All Inv	-
Min Investment	\$0
Turnover	4%
P/E	11.69
P.B.	1.43

### Expense Data

Prospectus Net / Gross	0.06% / 0.06%
Cat Avg Exp Ratio Net / Gross	1.05% / 2.27%
Expense Rank Net / Gross	5% / 2%
12b-1 Fees	0.00%
Waiver Amount	\$64,151
Waiver Exp Date	-