

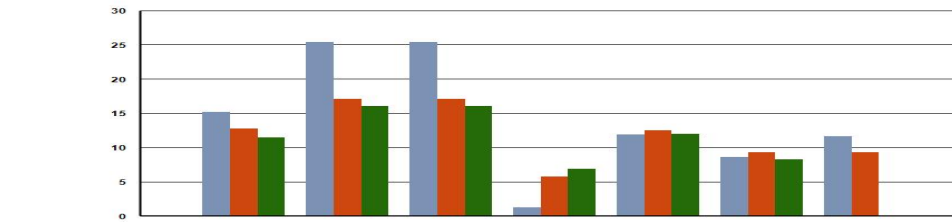
Fidelity® Extended Market Index (FSMAX)

As of: 12/31/2023

Fund Objective

The investment seeks to provide investment results that correspond to the total return of stocks of mid- to small-capitalization United States companies. The fund normally invests at least 80% of assets in common stocks included in the Dow Jones U.S. Completion Total Stock Market Index, which represents the performance of stocks of mid- to small-capitalization U.S. companies. The manager uses statistical sampling techniques based on such factors as capitalization, industry exposures, dividend yield, price/earnings (P/E) ratio, price/book (P/B) ratio, and earnings growth to attempt to replicate the returns of the index.

Annualized Total Returns



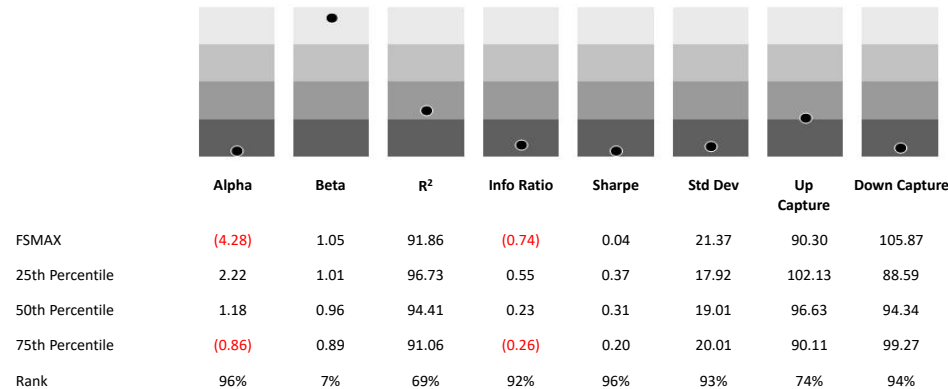
| | QTR | YTD | 1 YEAR | 3 YEAR | 5 YEAR | 10 YEAR | SINCE INCEPTION |
|-------------------|-------|-------|--------|--------|--------|---------|-----------------|
| FSMAX | 15.14 | 25.37 | 25.37 | 1.21 | 11.89 | 8.56 | 11.64 |
| Calculation Index | 12.78 | 17.07 | 17.07 | 5.76 | 12.50 | 9.26 | 9.28 |
| Category Average | 11.48 | 16.00 | 16.00 | 6.83 | 11.96 | 8.28 | - |
| Rank in Category | 6% | 9% | 9% | 96% | 54% | 40% | - |
| Category Size | 426 | 420 | 420 | 385 | 363 | 241 | - |

Performance data quoted represents past performance. Past performance does not guarantee future results. Investment return and principal value will fluctuate so that an investor's shares, when redeemed, may be worth more or less than their original cost. Current performance may be lower or higher than the performance quoted. To obtain current month-end performance information, please contact your plan advisor.

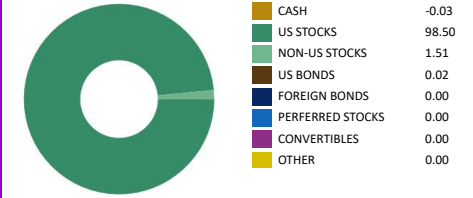
Calendar Year Return (%)

| | 2019 | 2020 | 2021 | 2022 | 2023 |
|-------------------|-------|-------|-------|---------|-------|
| FSMAX | 28.00 | 32.16 | 12.41 | (26.43) | 25.37 |
| Calculation Index | 30.31 | 16.91 | 22.38 | (17.43) | 17.07 |
| Category Average | 26.21 | 12.39 | 23.40 | (14.01) | 16.00 |
| Rank in Category | 52% | 4% | 97% | 97% | 9% |
| Category Size | 404 | 407 | 391 | 405 | 420 |

3 Year Risk Quartile Charts



Asset Allocation (%)



Sector Weighting

| | FSMAX | Category Average |
|--------------------------|-------|------------------|
| % BASIC MATERIALS | 3.73 | 4.79 |
| % CONSUMER CYCLICAL | 10.59 | 13.13 |
| % FINANCIAL SERVICES | 14.29 | 13.36 |
| % REAL ESTATE | 6.51 | 5.92 |
| % CONSUMER DEFENSIVE | 3.30 | 4.04 |
| % HEALTHCARE | 11.57 | 9.62 |
| % UTILITIES | 1.85 | 3.17 |
| % COMMUNICATION SERVICES | 4.05 | 2.38 |
| % ENERGY | 5.57 | 5.24 |
| % INDUSTRIALS | 15.55 | 18.68 |
| % TECHNOLOGY | 23.00 | 15.63 |

Top Ten Holding (%)

| | |
|---|-------------|
| Apollo Global Management Inc Class A | 0.61 |
| Cheniere Energy Inc | 0.72 |
| CrowdStrike Holdings Inc Class A | 0.71 |
| KKR & Co Inc Ordinary Shares | 0.65 |
| Marvell Technology Inc | 0.73 |
| Snowflake Inc Ordinary Shares - Class A | 0.85 |
| The Trade Desk Inc Class A | 0.57 |
| Uber Technologies Inc | 1.59 |
| VMware Inc Class A | 0.57 |
| Workday Inc Class A | 0.78 |
| % Assets in Top 10 | 7.78 |

Portfolio Data

| | |
|-----------------------|-----------------------------|
| Universe | Open-Ended |
| Peer Group | Mid-Cap Blend |
| Investment Vehicle ID | F00000MJRH |
| Strategy Inception | 09-08-2011 |
| Share Class Inception | 09-08-2011 |
| Calculation Index | iShares Russell Mid-Cap ETF |
| Manager Structure | Team |
| Lead Manager | Team |
| Manager Tenure | 14 |
| Strategy Assets | \$36.23b |
| Share Class Assets | \$36.23b / 100.00% |
| Avg Market Cap | \$5.68b |
| Closed New Inv | - |
| Closed All Inv | - |
| Min Investment | \$0 |
| Turnover | 18% |
| P/E | 13.66 |
| P.B. | 1.82 |

Expense Data

| | |
|-------------------------------|---------------|
| Prospectus Net / Gross | 0.04% / 0.04% |
| Cat Avg Exp Ratio Net / Gross | 1.06% / 1.79% |
| Expense Rank Net / Gross | 3% / 2% |
| 12b-1 Fees | 0.00% |
| Waiver Amount | \$63,030 |
| Waiver Exp Date | - |